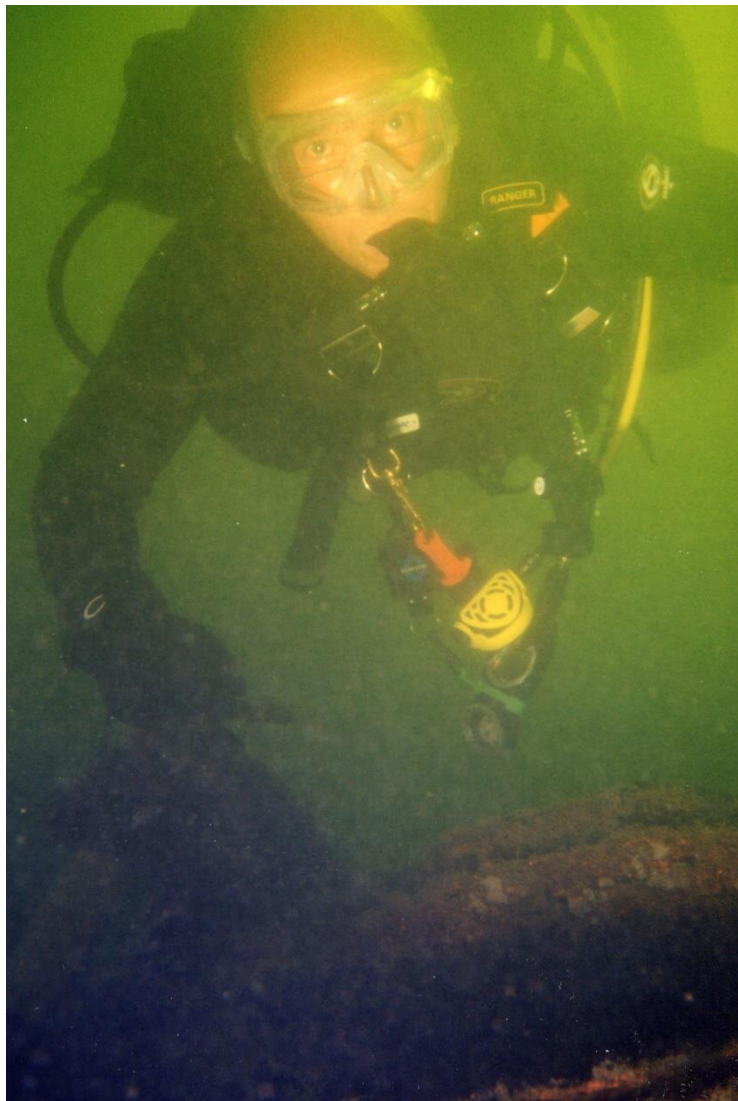


ZOOM IN 3 OR 4 TIMES TO GET THE BEST PICTURE VIEW.

Restored 1929 Oldsmobile.



Diver Down Overlooking The Rear Of  
The Car.





The Front Of The Car.



Left Headlight.



Right Headlight.



Left Headlight From Behind.





Distributor Showing 6 Sparkplug Wires.



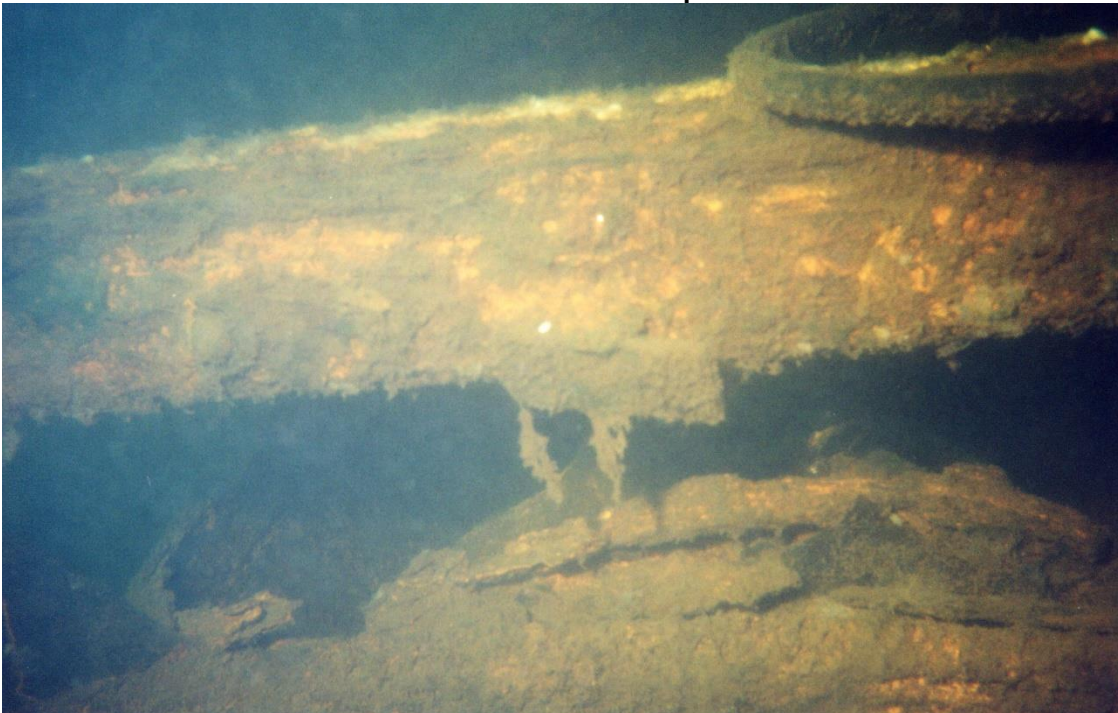
Left Side Of Engine Compartment.



Top of front windshield support with steering wheel sitting on it where I put it.

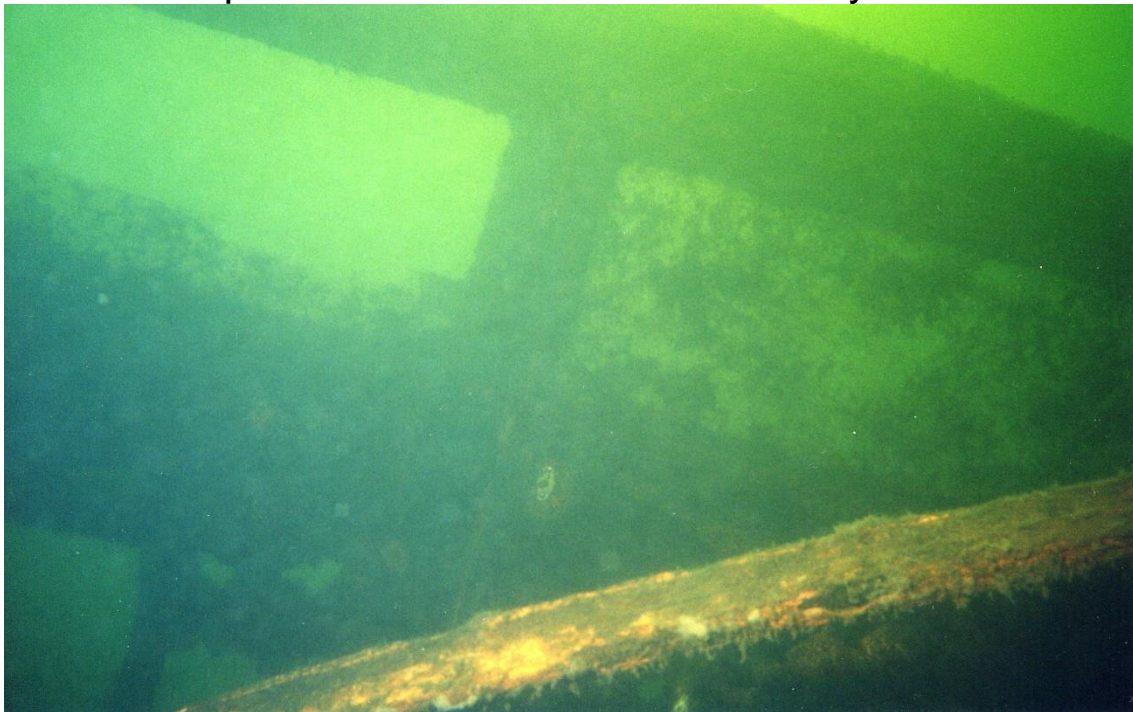


Looking forward through the front windshield. Glass is there but has fallen down and cannot be seen. Note the rear view mirror in the middle of the picture.

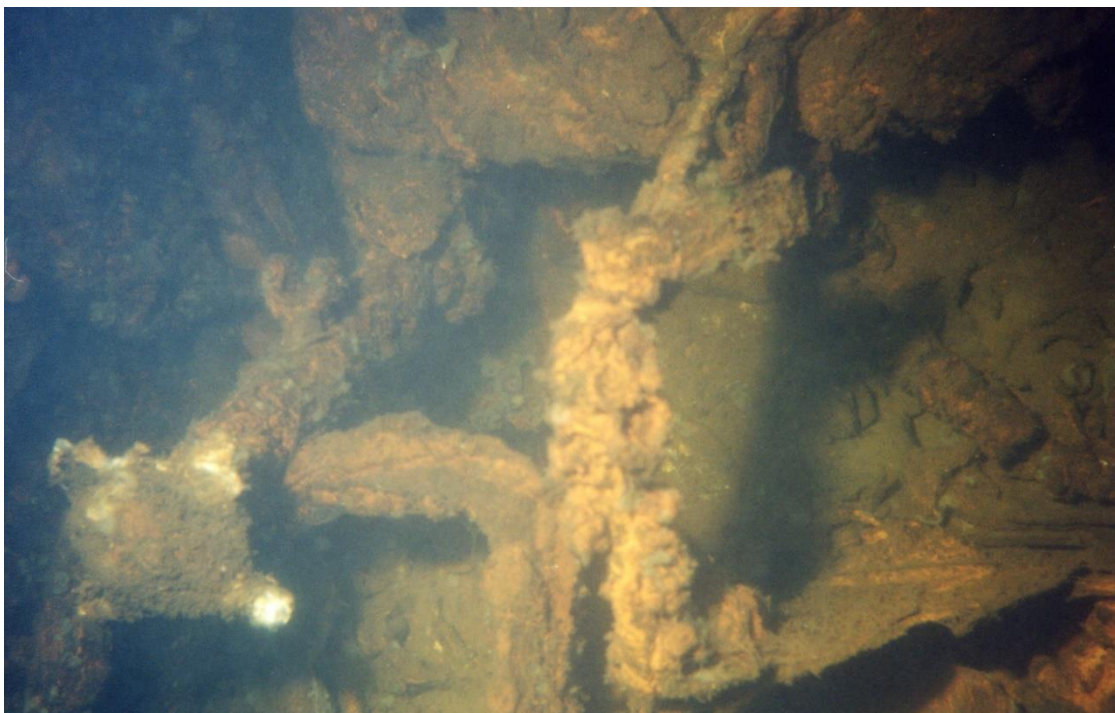




The inside of the left side of the car. Note that the front window is up and the back window is half way down.



Steering column (with square top) laying of the floor where it fell. I found the steering wheel at the end of the steering column.



The item with the circles in it is the dashboard plate that surrounded the speedometer and other gauges. There are 2 smaller holes on each side of the larger (speedometer) hole for a total of 5 holes. This plate was found directly under where the dashboard was.





Left front wheel with air valve.



Right rear tire and rear of car.



Spare tire on the trunk of the car.





Oldsmobile Radiator Medallion - Used From 1929-1948.



Hubcap (Really just a grease cap).

